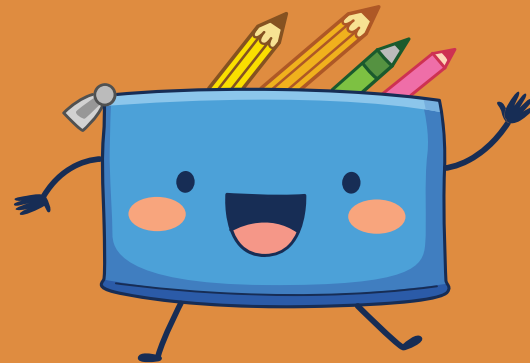
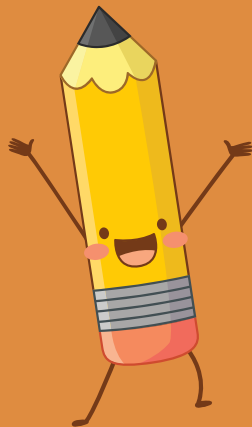


Welcome to Batheaston Church School

Apple Class

Meet the Teach!



Welcome Parents!

- Welcome parents to the classroom.
- Meet the staff
- Day to day routines
- Curriculum
- Reading
- PE
- Snacks
- Lunchtimes
- Questions



Meet the staff



Sue



Hannah



Lucy

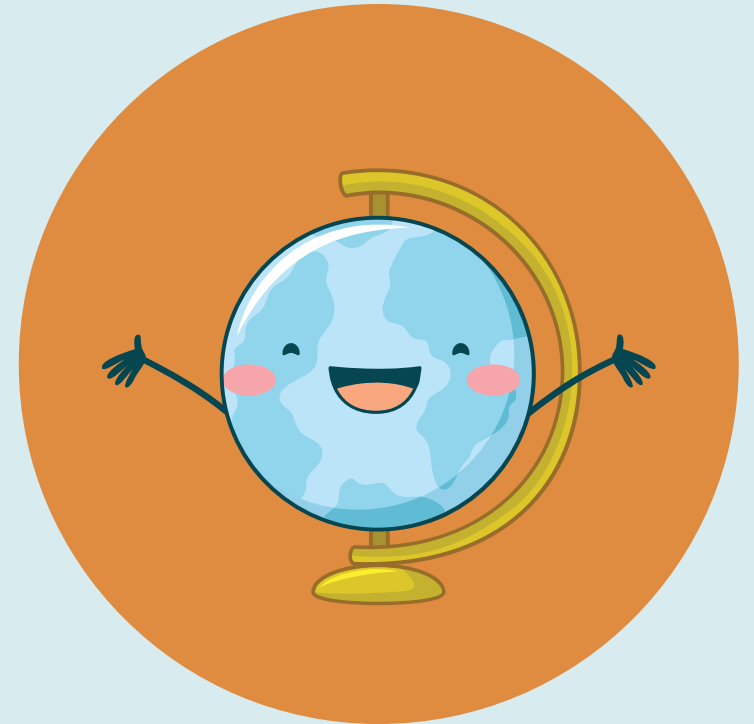


Jackie

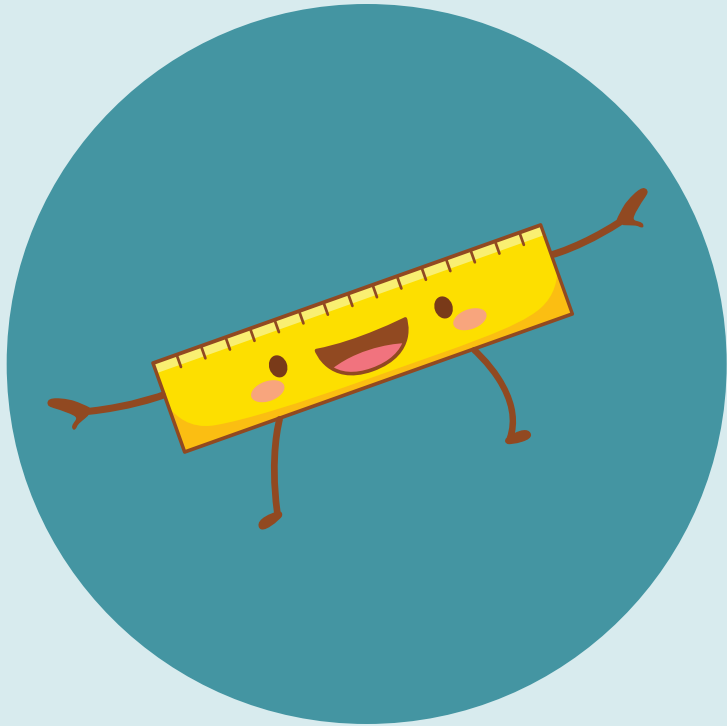
Affiliated with Norland Nannies, Bath Spa trainee teachers and parent helpers!

Day to Day Routines

- Full-time – Gates open at 8.45am – pick up time 3.15pm
- Playtimes and snacks
- Curriculum progression through the year
- Lunchtimes
- Clubs and Play Rangers
- Open classrooms
- Parent pay
- Book bag
- Newsletters



Curriculum



- **Revised EYFS curriculum 2021**
- Personal, Social and Emotional
- Communication and Language
- Physical development
- Literacy
- Mathematics
- Understanding the World
- Expressive Arts and Design
- Play based, child-centred approach (Continuous Provision)



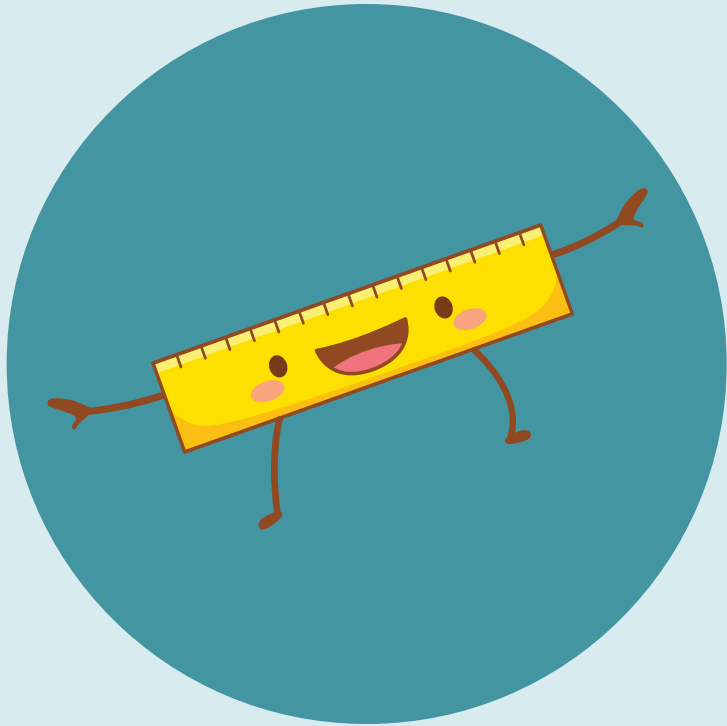
Reading

- PACT bags – Parent And Child Together
- Daily opportunities to read with your child or engage with a book (fiction or non-fiction) at home.
- New scheme – Fully decodable books
- Books will be changed twice weekly (Mondays and Thursdays)
- Develop and extend reading skills – Word reading, fluency, comprehension and vocabulary
- Little Apple Class Library– books to share and talk around the pictures and text
- Phonics – workshops, assessments and support at home
- Reading in class- with adults and as part of a group

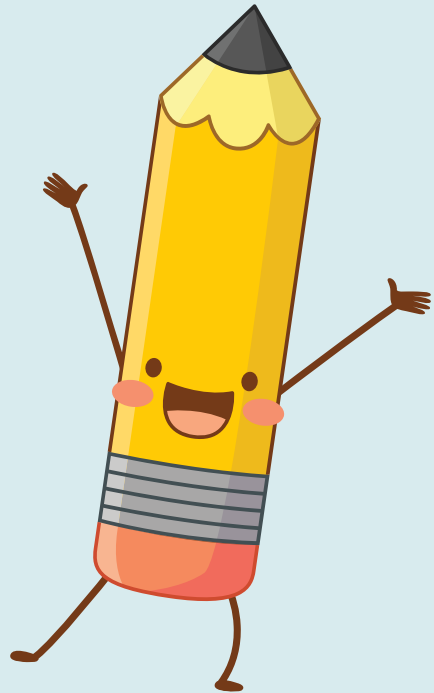
P.E

- Tuesday afternoon – Jon / Thursday mornings – Nikki
- Encourage independence and getting changed at home.
- Gradual progression to getting fully changed
- PE bags in school all the time please (all clothes named!!)
- Kit: shorts, t-shirt, track suit bottoms, daps.
- Navy and/or Red

Snacks



- **Healthy Eating policy**
- Free fruit or veg daily to Reception, year 1 and 2
- Welcome to bring your own snacks but must be in line with our healthy eating policy
- No sweet biscuits, crisps, sugary drinks or chocolate
- No nuts – allergies
- Water bottles (please do not place in PACT bags)
- Snacks to be put in drawer



Lunchtimes

- Week 4 – Lunch in the hall at 12pm
- Special Friends support
- Allergies and food intolerances
- Menu – options
- Packed lunch
- Free school dinners / Pupil Premium

Further information

- Website /Twitter / Facebook (photos)
- Teams – personal logins (Online Learning)
- Uniform
- Wellies / coats
- Learning Journals
- Baseline assessments
- Personal belongings – special toys!
- Parental help

Questions?

